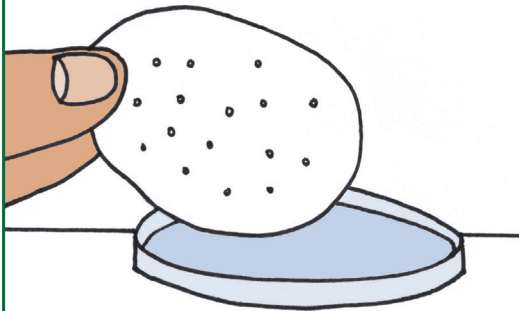


Observing Germination with Wisconsin Fast Plants®

Germinating and growing young seedlings using a seed disk in a petri dish

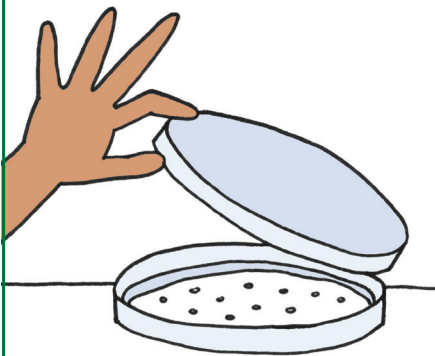
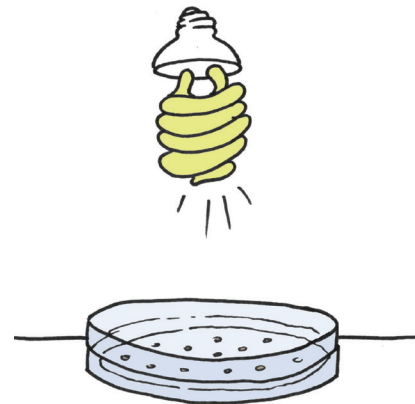
Note: Seedlings grown in a petri dish will not grow full size or complete their life cycle as shown on the cover.



1. Place one seed disk in the bottom of a standard-size, plastic or glass petri dish.

2. Thoroughly moisten the paper circle in the petri dish with a dropper.

3. Position the petri dish 10 cm beneath a 24-hour fluorescent light source. Be sure the paper towel remains moist by adding a few drops of water each day. However, keep in mind that if seeds are under water they may not germinate.



4. Set the petri dish in a warm location approximately 65 to 80°F. Check the moisture each day to be sure the seed disk stays moist.

5. Over the next 3–5 days carefully observe the germinating seeds and seedlings.

